

## *BEAUTIFYING STREETS BY DAY, LIGHTING THEM BY NIGHT*

*Valmont offers the broadest selection of light poles in the world for new and existing projects and our structures will enhance any roadway or residential area.*



*(LEFT & TOP) STREET LIGHT POLES INSTALLED AT HYDERABAD OUTER RING ROAD; (BOTTOM) STREET LIGHT POLES INSTALLED IN GOA*

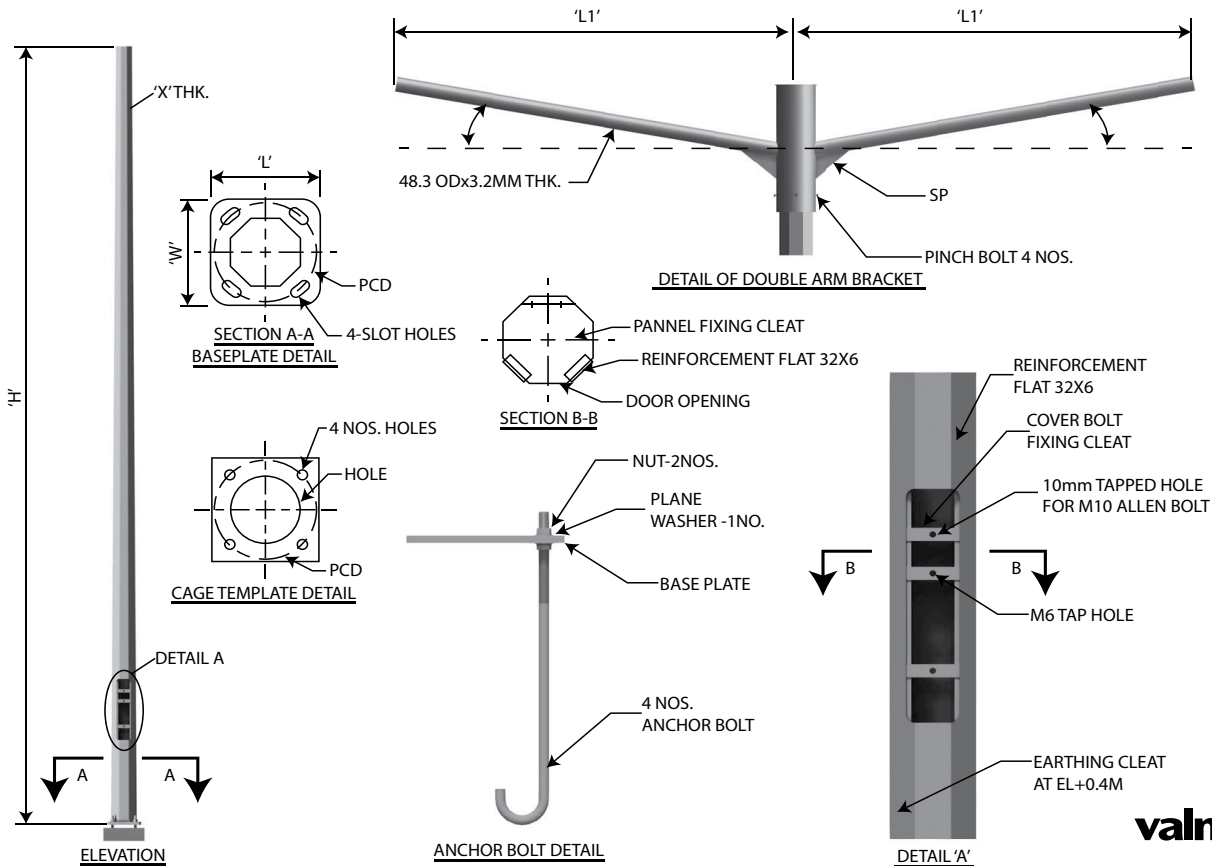
## **PROVIDING ESSENTIAL VISIBILITY & SAFETY**

People gain an important sense of safety and security when neighbourhood and city roadways are well illuminated with street lights. Possessing a passion for quality, service and innovation, Valmont designs, manufactures and supplies decorative and conventional street lighting poles and lamp posts that are installed in cities across the country.

## **PRODUCTS ENGINEERED WITH SECURITY, LONGEVITY & ARTISTRY IN MIND**

Our unmatched access to durable and diverse resources guarantees the best final result for your project. With tapered and non-tapered steel, decorative and semi-decorative options, our structures can satisfy demands for stylish, economical, and low-maintenance materials.

# CUSTOMISED ENGINEERING



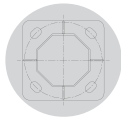
**valmont** STRUCTURES

By considering the weather conditions, usage, and aesthetics related to your project, we use our expertise to recommend the longest-lasting materials based on years of research and extensive testing. We can assist at every stage of the engineering and manufacturing process, from design concepts and renderings, to sales proposals and marketing support. We ensure that our poles conform to various international industry standards and specifications.

- The structure is suitable for wind speed as per IS 875 Part III 2015 and PLG 07.
- The pole is fabricated from special steel plates, conforming to ASTM A 572/BS EN 10025.
- The welding is in accordance with the American Welding Society (AWS).
- The entire pole is single hot-dip galvanised, internally and externally as per ASTM A123 and A153.
- The top and bottom diameters and plate thickness of the poles are designed as per EN 40.
- The design life of the poles is a minimum of 25 years.



Up to 12 Metres  
in Height



Traditional  
Base Plate Design



Available with  
Decorative Brackets



Hot-Dip Galvanised  
for Better Protection

To know more about products manufactured by Valmont in India, please visit our website [www.valmont.in](http://www.valmont.in).

Find us on Facebook



[www.facebook.com/valmont.india](http://www.facebook.com/valmont.india)

Follow us on



@ValmontIndia

Copyright © Valmont Structures Pvt. Ltd. All Rights Reserved. This document is the sole property of Valmont Structures Pvt. Ltd. No part of this document may be reproduced, stored in a retrieval system, or transmitted in any form or by any means - electronic, mechanical, photocopying, recording or otherwise - without prior written permission of the concerned authority. © All Rights Reserved.

## LIGHTING ANYWHERE, ANYTIME

*For roadways, ports and other industrial areas that require high-mounted light structures, Valmont's tapered steel high masts are the superior solution.*



*HIGH MASTS INSTALLED AT INDAPUR, MAHARASHTRA AND HYDERABAD OUTER RING ROAD*

## YOUR HIGH MAST LIGHTING SOLUTION

High Masts are often located where today's most busy expressways merge or intersect. Valmont's tapered steel high masts also support other large area lighting applications, such as those found at airports, shipping terminals and other heavy-industry zones. In all these applications, safety is paramount and technical design expertise is essential.

## IN-HOUSE ENGINEERING EXPERTISE

Engineers, architects, contractors and city planners rely on Valmont for unparalleled safety and quality manufacturing for high masts. Our engineers consider lighting load, tower weight, variable wind speeds, local soil conditions and a host of other relevant variables, which less experienced suppliers may overlook. Meeting the needs of you, our customer, is our top priority. No matter how large or small your order, our focus is to provide a quality product, to deliver that product on time and as per your project requirement.



## *GIVING NEW MEANING TO HIGH LIGHTS*

*High activity areas - merging expressways, airports, heavy-industry zones - require an extra emphasis on safety and security. That's why we created our high mast lighting poles.*



*R.K. KHANNA TENNIS COMPLEX, NEW DELHI*

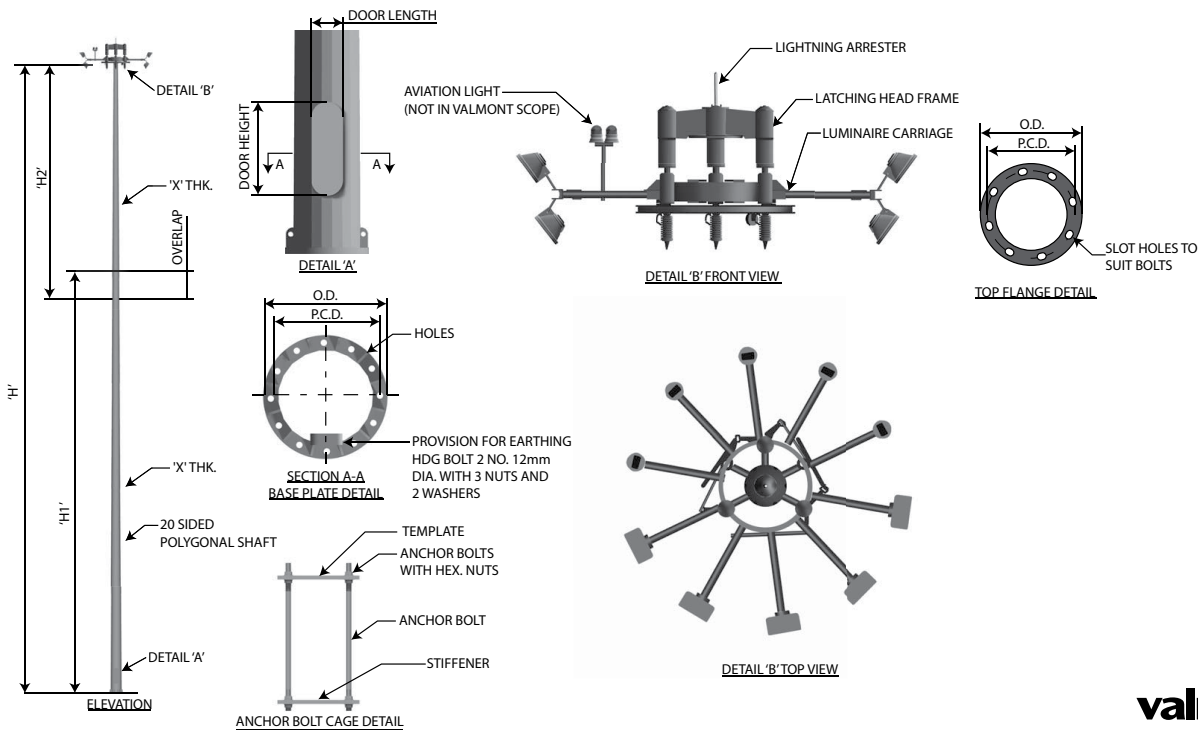
## **HIGH MAST LIGHTING SOLUTIONS**

Our single tube, high mast structures can reach heights of up to 100 feet and are adaptable to lowering devices or fixed mount arrangements. To meet your aesthetic needs, our high masts poles are available in a variety of configurations and finishes, such as painted, galvanised, or paint over galvanising.

## **IN-HOUSE ENGINEERING EXPERTISE**

Engineers, architects, contractors and city planners rely on Valmont for unparalleled safety and quality manufacturing for high masts. Our engineers consider lighting load, tower weight, variable wind speeds, local soil conditions and a host of other relevant variables, which less experienced suppliers may overlook. Meeting the needs of you, our customer, is our top priority. No matter how large or small your order, our focus is to provide a quality product, to deliver that product on time and as per your project requirement.

# USING THE BEST MATERIALS WISELY



**valmont**   
STRUCTURES

Valmont High Masts are of continuously tapered, polygonal cross section, presenting a visually aesthetic appearance and are based on proven designs conforming to international industry standards and specifications, ensuring quality performance and reliable service. The design life of the mast is a minimum of 25 years.

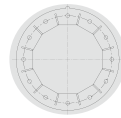
- The structure is suitable for wind speed as per IS 875 Part III 2015 and PLG 07.
- The mast is fabricated from special steel plates, conforming to ASTM A 572/BS EN 10025.
- The welding is in accordance with the American Welding Society (AWS).
- The entire mast is single hot-dip galvanised, internally and externally as per ASTM A123.
- The top and bottom diameters and plate thickness of the mast are designed as per EN 40.



Up to 30 Metres  
in Height



Raising & Lowering  
Mechanism Available



Traditional  
Base Plate Design



Hot-Dip Galvanised  
for Better Protection

To know more about products manufactured by Valmont in India, please visit our website [www.valmont.in](http://www.valmont.in).

Find us on Facebook



[www.facebook.com/valmont.india](http://www.facebook.com/valmont.india)

Follow us on



@ValmontIndia

Copyright © Valmont Structures Pvt. Ltd. All Rights Reserved. This document is the sole property of Valmont Structures Pvt. Ltd. No part of this document may be reproduced, stored in a retrieval system, or transmitted in any form or by any means - electronic, mechanical, photocopying, recording or otherwise - without prior written permission of the concerned authority. © All Rights Reserved.

## WHEN LIGHTING PERFORMANCE MATTERS

*For more than 40 years, Valmont has offered steel and aluminum structures to meet the most demanding sports lighting requirements. Our engineering capabilities are what set us apart from the competition.*



*40M MASTS AT ISL RABINDRA SAROVAR STADIUM, KOLKATA*



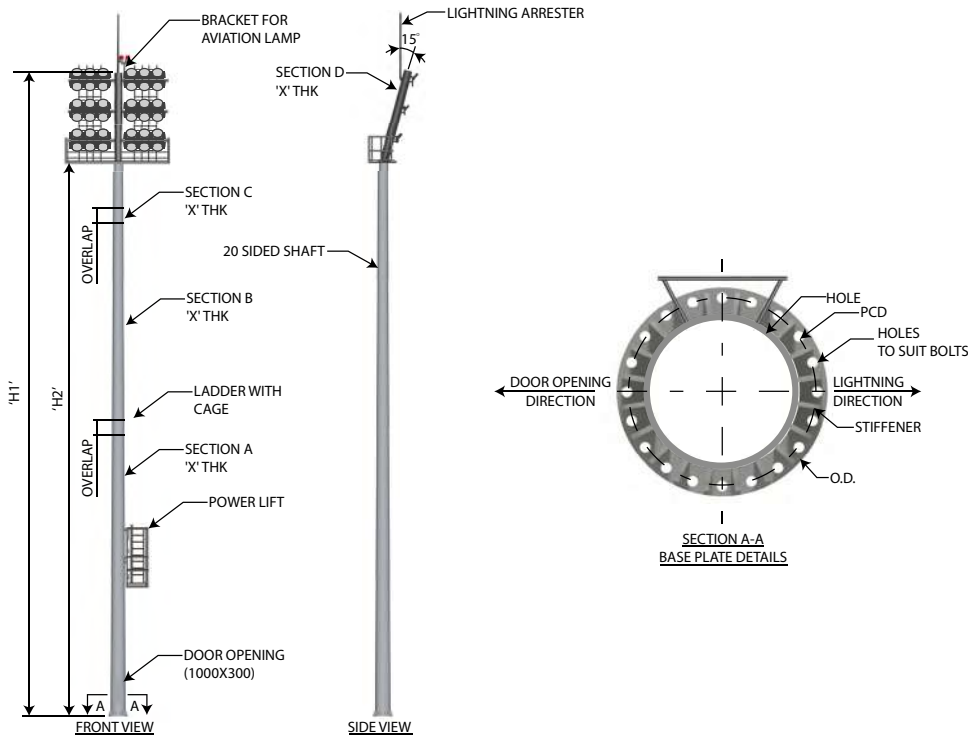
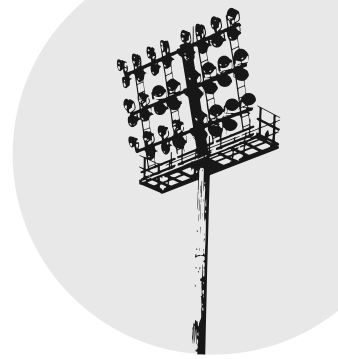
*(TOP) MOHALI STADIUM, CHANDIGARH; (BOTTOM) 40M MASTS AT TIRUNELVELI, NATHAM SUPPLIED FOR TAMIL NADU PREMIER LEAGUE*

## SOLUTIONS FOR AMATEUR & PROFESSIONAL ATHLETIC VENUES

As outdoor sports and sports television broadcasts become more widespread, the need for high quality sports venue lighting is vital. Players need to see more clearly as pace of play speeds up. Fan expectations are rising along with ticket prices and clarity must always exceed the demands of high-definition broadcast and viewing technologies around the world. And that's why we helped create the norms by which outdoor sporting events are lit.

Meeting the needs of you, our customer, is our top priority. No matter how large or small your order, whether it's a standard product or specially designed to meet your requirement, our focus is to provide a quality product, to deliver that product on time and as per your standards, and ultimately, to be your reliable sports and stadium lighting partner.

# IN-HOUSE CUSTOM-DESIGN INGENUITY



**valmont**   
STRUCTURES

With a solid foundation of in-house, engineering excellence, Valmont can design, manufacture and produce structures, which address design challenges in any sports and stadium venue.

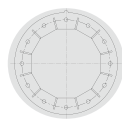
For supporting sports lighting loads, Valmont's tapered steel poles provide unparalleled safety from decades of technical design and manufacturing expertise.

We ensure that our high masts conform to various international industry standards and specifications.

- The structure is suitable for wind speed as per IS 875 Part III 2015 and PLG 07.
- The mast is fabricated from special steel plates, conforming to ASTM A 572/BS EN 10025.
- The welding is in accordance with the American Welding Society (AWS).
- The entire mast is single hot-dip galvanised, internally and externally as per ASTM A123 and A153.
- The top and bottom diameters and plate thickness of the mast are designed as per EN 40.
- The design life of the mast is a minimum of 25 years.



Up to 72 Metres  
in Height



Traditional  
Base Plate Design



Hot-Dip Galvanised  
for Better Protection

To know more about products manufactured by Valmont in India, please visit our website [www.valmont.in](http://www.valmont.in).

Find us on Facebook



[www.facebook.com/valmont.india](http://www.facebook.com/valmont.india)

Follow us on



@ValmontIndia

Copyright © Valmont Structures Pvt. Ltd. All Rights Reserved. This document is the sole property of Valmont Structures Pvt. Ltd. No part of this document may be reproduced, stored in a retrieval system, or transmitted in any form or by any means - electronic, mechanical, photocopying, recording or otherwise - without prior written permission of the concerned authority. © All Rights Reserved.

## SIGNAGE MASTS THAT SUPPORT YOUR SIGN AND YOUR BUSINESS

*If your business depends on people finding your location—gas station, grocery store, repair shop, etc.— then signage masts from Valmont® Structures are the best way to make sure your sign, and your business, are noticed.*



Through its decades of experience engineering and manufacturing traffic sign structures, outdoor lighting poles, high-masts and utility poles, Valmont® Structures understands the countless variables involved in creating signage masts that are installed near high-traffic roadways. Our signage masts from are the most durable on the market.

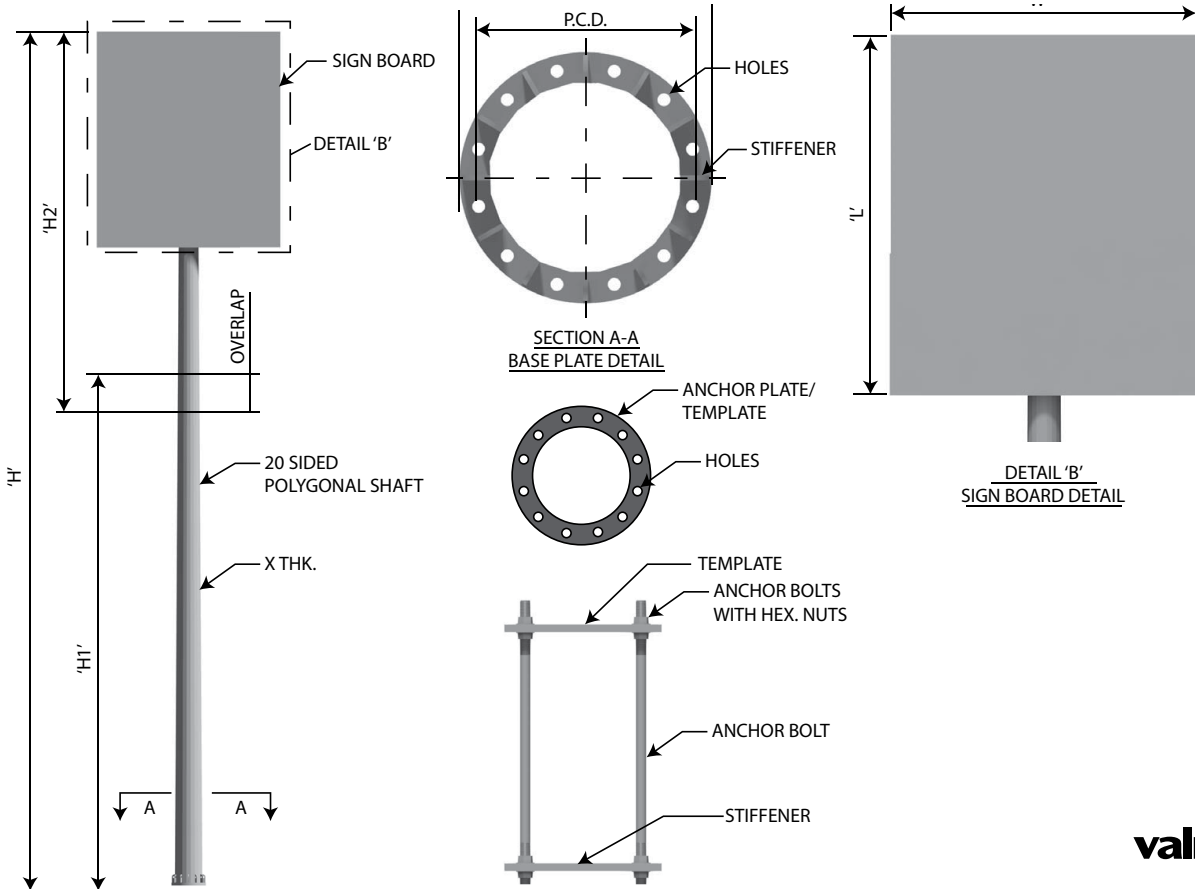
But durability is just the beginning of the value of we provide you:

- Our signage masts come with raising and lowering mechanisms, making sign repairs faster and more economical.
- We offer heights of 40 meters (sometimes higher), giving you optimal visibility while still maintaining our high standards for safety.
- Our custom design capabilities also mean they are unique to your business, offer more aesthetic value and can be coated to extend their longevity.

Meeting the needs of you, our customer, is our top priority. No matter how large or small your order, whether it's a standard product or specially designed to meet your requirement, our focus is to provide a quality product, to deliver that product on time and as per your standards, and ultimately, to be your reliable partner to help highlight your brand.

22M SIGNAGE MAST FOR SHELL AT CHENNAI

# USING THE BEST MATERIALS WISELY



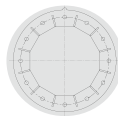
With a solid foundation of in-house, engineering excellence, Valmont can design, manufacture and produce structures, which address design challenges in any environment. Valmont's tapered steel poles provide unparalleled safety from decades of technical design and manufacturing expertise.

We ensure that our high masts conform to various international industry standards and specifications.

- The structure is suitable for wind speed as per IS 875 Part III 2015 and PLG 07.
- The mast is fabricated from special steel plates, conforming to ASTM A 572/BS EN 10025.
- The welding is in accordance with the American Welding Society (AWS).
- The entire mast is single hot-dip galvanised, internally and externally as per ASTM A123 and A153.
- The top and bottom diameters and plate thickness of the mast are designed as per EN 40.
- The design life of the mast is a minimum of 25 years.



Up to 40 Metres in Height



Traditional Base Plate Design



Hot-Dip Galvanised for Better Protection

To know more about products manufactured by Valmont in India, please visit our website [www.valmont.in](http://www.valmont.in).

Find us on Facebook



[www.facebook.com/valmont.india](http://www.facebook.com/valmont.india)

Follow us on



@ValmontIndia

Copyright © Valmont Structures Pvt. Ltd. All Rights Reserved. This document is the sole property of Valmont Structures Pvt. Ltd. No part of this document may be reproduced, stored in a retrieval system, or transmitted in any form or by any means - electronic, mechanical, photocopying, recording or otherwise - without prior written permission of the concerned authority. © All Rights Reserved.



# SMART POLES

*Your Solution For Tomorrow*

# SMART POLES FOR SMARTER CITIES

Valmont® Structures offers state-of-the-art Smart Poles for urban areas and smart cities with multi-utility functions and facilities for citizens, visitors and businesses. The poles are sleek, visually appealing and augment city aesthetics. Valmont® Smart Poles implement the plug-and-play based methodology enabling the add-on of any feature and facility at any time in future with absolute ease. These poles are designed, manufactured and supplied to order as per customer requirements and specifications.



*Energy-efficient  
LED Luminaire*



*4G Telecom upgradable  
as per user's choice  
(options available)*



*Panic Button for any  
emergency situation  
or distress call*



*Interactive Screen for  
specific applications*



*Smart Billboard,  
Signage, Advertising,  
Traffic signalling, etc.  
(on demand)*



*Wi-Fi Access Points  
providing broadband  
wireless network coverage*



*Weather proof, IP Network  
Camera for Traffic &  
Safety surveillance*



*Air Quality Monitoring  
(as an option)*



*Car or EV Charging  
(as an option)*



*PA System for BGM &  
communication from  
city control room*

# SMART POLE ACCESSORIES

Valmont® Smart Poles come with several accessories such as a CCTV camera, a Public Address System, panic button and an interactive touch screen. All electrical and electronic components like MCBs, switches, media converters etc. are housed within the Smart Pole.



## Lighting

*Energy-efficient LED luminaire with remote lighting management, street light dimming at night & weather-proof IP66*



## Network Camera

*IP-based Network Bullet Camera  
IP-based Network Speed Dome Camera  
Weather-proof IP66  
Vandal-proof IK10*



## IP-based Public Address System

*Speaker – Weather-proof  
Built-in Ethernet IP interface  
Built-in power amplifier*



## Interactive Screen

*Colour Touch Screen Display  
IP66, CE/UL, RoHS*



## ABOUT US

Valmont® Structures designs and manufactures a broad selection of standard and custom-engineered street light poles, decorative poles, CCTV poles, VMS poles, high-masts, signage masts, traffic and gantry structures, which harmoniously integrate structural durability with visual and aesthetic appeal to support every customers' outdoor illumination and other infrastructural needs.

At Valmont® Structures, we have built our reputation on a company-wide customer service, innovation and cost effective solutions. Most importantly, we put our experience, understanding of specifications, technology and operational excellence into everything we design and manufacture. We pride ourselves on being people of integrity who always excel at delivering optimal results.

To know more about products manufactured by Valmont® Structures in India, please visit our website [www.valmont.in](http://www.valmont.in).

Find us on Facebook



[www.facebook.com/valmont.india](http://www.facebook.com/valmont.india)

Follow us on



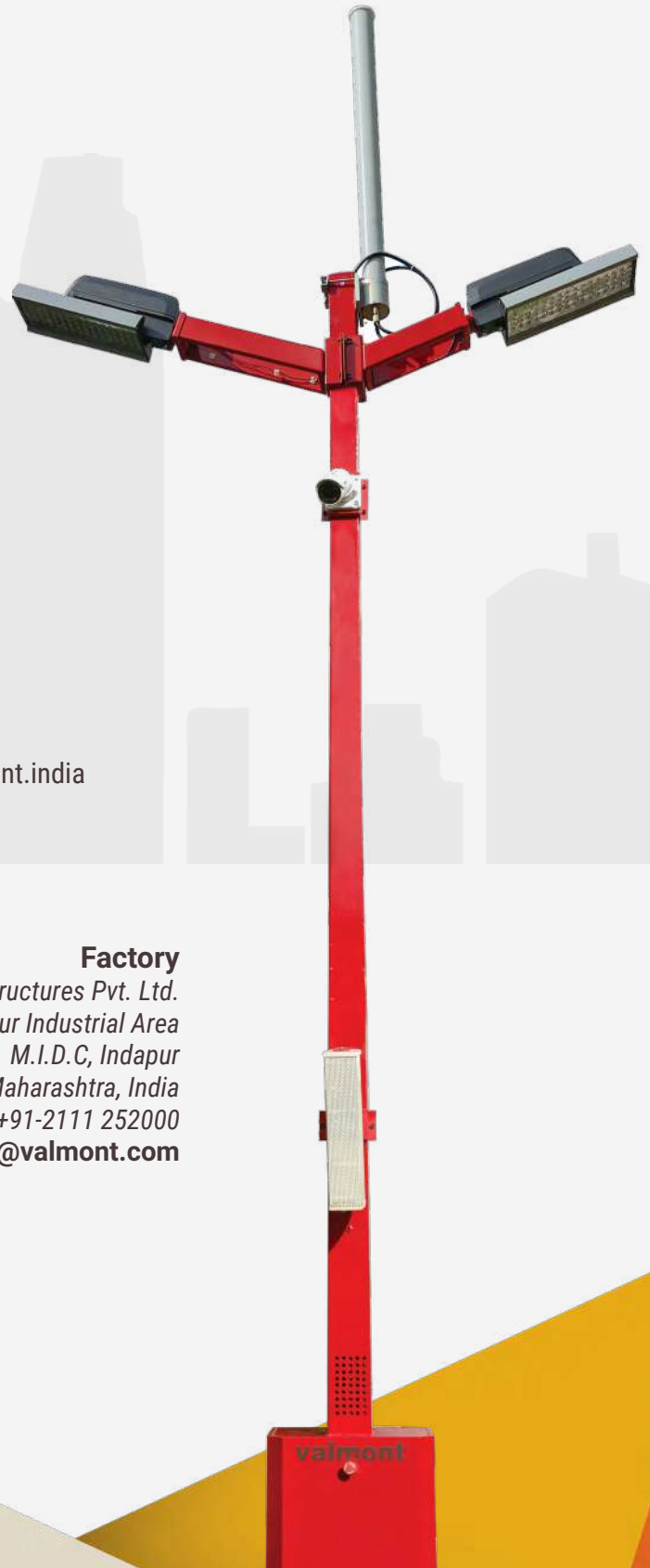
[@ValmontIndia](https://twitter.com/ValmontIndia)

### Corporate Office

Valmont Structures Pvt. Ltd.  
Unit 203, 2nd Floor, Pentagon 4  
Magarpatta City, Hadapsar  
Pune - 411013, Maharashtra, India  
Tel: +91-20-30403831  
[marketingindia@valmont.com](mailto:marketingindia@valmont.com)

### Factory

Valmont Structures Pvt. Ltd.  
A-20, Indapur Industrial Area  
M.I.D.C, Indapur  
Pune Dist. - 413132, Maharashtra, India  
Tel: +91-2111 252000  
[sales.india@valmont.com](mailto:sales.india@valmont.com)



## ***YOUR FLAG IS ONLY AS STRONG AS THE MAST THAT SUPPORTS IT***

*Your flag is a symbol of who you are and what you believe. That's why it deserves to fly on the best mast available.*



A flag mast from Valmont® Structures is engineered and manufactured with decades of traffic and telecommunications structure, lighting and utility poles and coatings experience behind it. What's more, Valmont is the only manufacturer in India following the FP 1001-07 international design code. Your flag mast is too important for anything less.

When you purchase a flag mast from Valmont, you get:

- Galvanising or liquid coatings that not only add longer life and aesthetic value to your flag mast, but can also be colored to further support your organization or cause.
- Masts are typically manufactured up to 60 meters tall, providing plenty of height while still maintaining an unwavering commitment to safety from Valmont.
- Tapered mast designs reduce the impact from wind, and add to the durability and longevity of the mast.

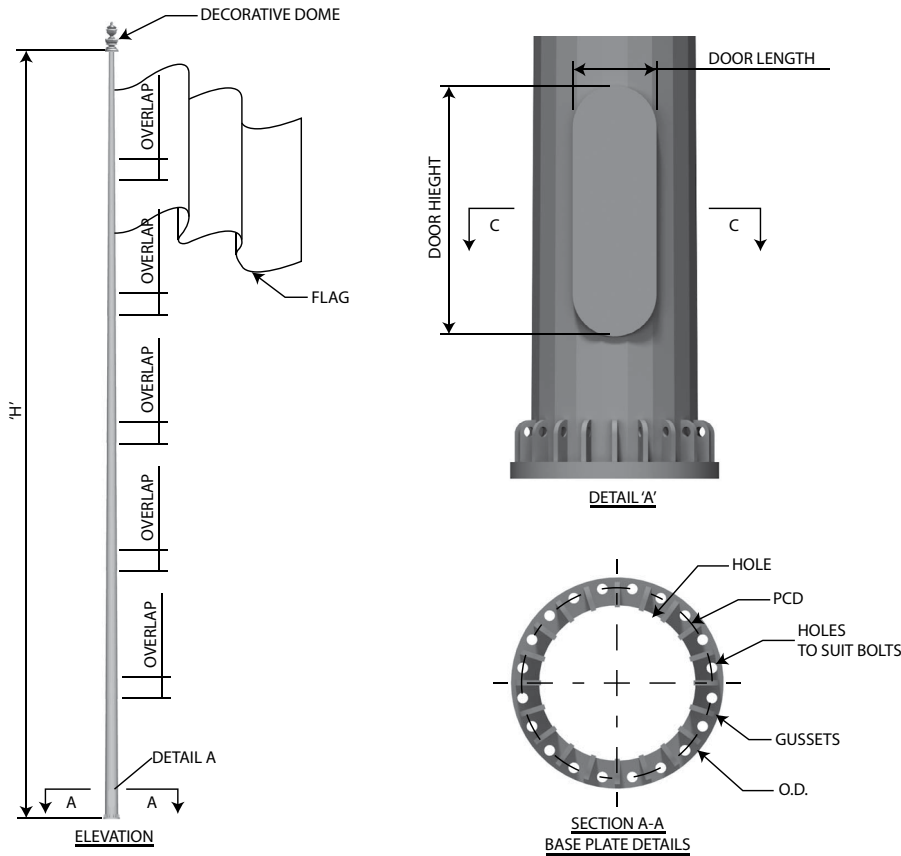
Whether you raise your flag once, or raise and lower it each day, a flag mast from Valmont comes with everything you need to fly your flag with ease and confidence:

- 3" diameter dome on top
- Single flag rotating truck (allows flag to blow freely in the wind)
- 2 swivel snaps to attach the flags to the rope
- Rope to raise and lower your flag
- Anchor cleat for wrapping rope
- Embedment sleeve for the mast

Whether it is for a government facility, university or school campus, sports venue, commercial enterprise, park or even for personal use, Valmont® Structures offers a custom-engineered flag mast that is easy to use, backed by decades of pole design and manufacturing experience and will display your flag for many years into the future.

22M FLAG MAST AT CHENNAI

# ENGINEERED WITH PRECISION



**valmont**   
STRUCTURES

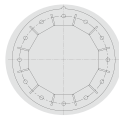
By considering the weather conditions, usage, and aesthetics related to your project, we use our expertise to recommend long-lasting materials based on years of research and extensive testing.

We can assist at every stage of the engineering and manufacturing process, from design concepts and renderings, to sales proposals and marketing support. We ensure that our poles conform to various domestic and international industry standards and specifications.

- The structure is suitable for wind speed as per IS 875 Part III 2015 and PLG 07.
- The mast is fabricated from special steel plates, conforming to ASTM A 572/BS EN 10025.
- The welding is in accordance with the American Welding Society (AWS).
- The entire mast is single hot-dip galvanised, internally and externally as per ASTM A123 and A153.
- The top and bottom diameters and plate thickness of the mast are designed as per EN40.
- The design life of the mast is a minimum of 25 years.



Up to 60 Metres  
in Height



Traditional  
Base Plate Design



Adhering to Correct  
Design Codes



Hot-Dip Galvanised  
for Better Protection

To know more about products manufactured by Valmont India, please visit our website [www.valmont.in](http://www.valmont.in).

Find us on Facebook



[www.facebook.com/valmont.india](http://www.facebook.com/valmont.india)

Follow us on



@ValmontIndia

Copyright © Valmont Structures Pvt. Ltd. All Rights Reserved. This document is the sole property of Valmont Structures Pvt. Ltd. No part of this document may be reproduced, stored in a retrieval system, or transmitted in any form or by any means - electronic, mechanical, photocopying, recording or otherwise - without prior written permission of the concerned authority. © All Rights Reserved.

**OPTIMAL TRAFFIC FLOW STARTS WITH WORLD CLASS INFRASTRUCTURE**

*Everyday, you work hard to make India's roads safer. We do, too. Our commitment to safer roads has made Valmont® a leader of engineered support structures.*



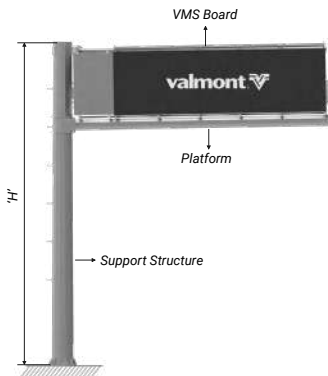
*(TOP LEFT) F-TYPE CANTILEVER INSTALLED AT HYDERABAD OUTER RING ROAD; (TOP RIGHT) TRAFFIC SIGNAL STRUCTURE INSTALLED IN PUNE & (BOTTOM) GANTRY INSTALLED AT HYDERABAD OUTER RING ROAD*

**ENSURING SAFE & EFFICIENT MOVEMENT, ALWAYS**

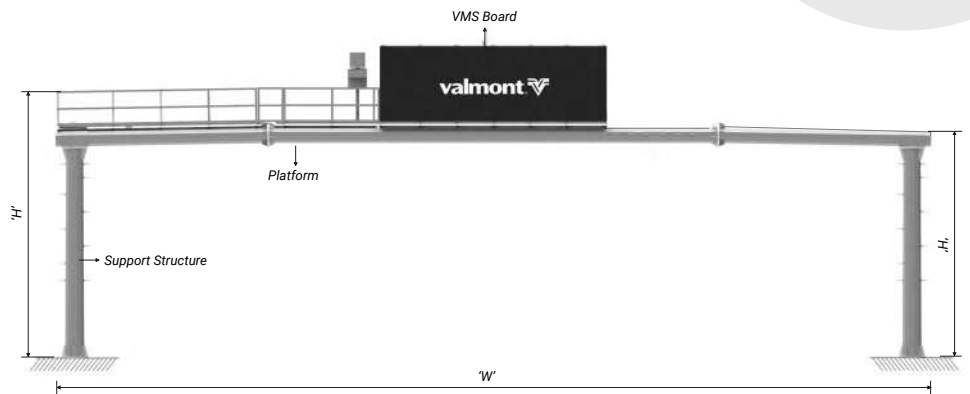
Valmont® designs and produces custom sign structures to support intelligent transportation systems and variable message signs (VMS). These electronic signs are increasingly posted along busy highways. Whether your needs require sign poles, sign bridges, or a combination of signage supports, Valmont® can custom-engineer and manufacture strong & durable VMS structures built to meet or exceed specified local and regional standards.

We recognise and appreciate the invaluable contributions of traffic engineers and transportation planners in facilitating the safe, efficient movement of people and vehicles on roads and highways. For decades, we have been producing traffic signal structures across India's busiest transportation corridors. Whether you're revitalizing your main street or developing a major intersection, we're a one-stop shop that leverages you, our customer's transportation management needs.

## IN-HOUSE CUSTOM-DESIGN INGENUITY



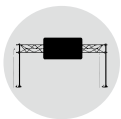
**F-TYPE CANTILEVER**



**GANTRY**

By considering the weather conditions, usage, and aesthetics related to your project, we use our expertise to recommend the longest-lasting materials based on years of research and extensive testing. We can assist at every stage of the engineering and manufacturing process, from design concepts and renderings, to sales proposals and marketing support. We ensure that our poles conform to various international industry standards and specifications.

- The structure is designed as per latest engineering standards - **AASHTO 2015 & PLG 07**.
- It is available in both polygonal & conical designs & is suitable for wind speed as per **IS 875 Part III 2015**.
- The entire structure is hot-dip galvanised, internally and externally as per **ASTM A123 and A153**.
- The welding is in accordance with the American Welding Society (**AWS**).
- We offer turnkey solutions along with the Variable Message Sign boards.
- The design life of the structures is a minimum of 25 years.



Up to 6.5 Metres  
in Height



VMS Board  
Available on Request



Installation Services  
Offered



Hot-Dip Galvanised  
for Better Protection

To know more about products manufactured by Valmont in India, please visit our website [www.valmont.in](http://www.valmont.in).

Find us on Facebook



[www.facebook.com/valmont.india](http://www.facebook.com/valmont.india)

Follow us on



@ValmontIndia



Copyright © Valmont Structures Pvt. Ltd. All Rights Reserved. This document is the sole property of Valmont Structures Pvt. Ltd. No part of this document may be reproduced, stored in a retrieval system, or transmitted in any form or by any means - electronic, mechanical, photocopying, recording or otherwise - without prior written permission of the concerned authority. © All Rights Reserved.



**valmont**  |  
STRUCTURES



To know more about products manufactured by Valmont in India, please visit our website [www.valmont.in](http://www.valmont.in).

Find us on Facebook  [www.facebook.com/valmont.india](http://www.facebook.com/valmont.india) Follow us on  [@ValmontIndia](https://twitter.com/ValmontIndia)

**MAKING POWER MORE ACCESSIBLE**

**Corporate Office**

Valmont Structures Pvt. Ltd.  
Unit 203, 2nd Floor, Pentagon 4  
Magarpatta City, Hadapsar  
Pune - 411013, Maharashtra, India  
Tel: +91-20-30403831  
[marketingindia@valmont.com](mailto:marketingindia@valmont.com)

**Factory**

Valmont Structures Pvt. Ltd.  
A-20, Indapur Industrial Area  
M.I.D.C., Indapur  
Pune Dist. - 413132, Maharashtra, India  
Tel: +91-2111 252000  
[sales.india@valmont.com](mailto:sales.india@valmont.com)

Copyright © Valmont Structures Pvt. Ltd. All Rights Reserved. This document is the sole property of Valmont Structures Pvt. Ltd. No part of this document may be reproduced, stored in a retrieval system, or transmitted in any form or by any means - electronic, mechanical, photocopying, recording or otherwise - without prior written permission of the concerned authority. © All Rights Reserved.



## START WITH A BETTER POLE

No question that strengthening circuits and boosting system resiliency are top of mind. But, before you decide that bigger poles, placing poles closer together or moving susceptible lines is the answer, let us show you a better way.

Steel distribution poles offer a more durable path to robust structures. They stand up to the elements in extreme conditions, maintain consistent strength and shape over time and are strong enough to resist the cascading effect that comes when one pole falls. They are also a better long-term value, lasting for longer durations.

Our distribution monopoles can be designed for single circuit as well as multi circuit lines with different orientations. Suitable extensions always provide easy solutions in dealing with the undulations in the route of the line.

Valmont knows that your power distribution structure needs may not be as easy as specifying one pole for the entire project. Terrain, environment, wind speed & soil conditions are the important factors which influence while determining the structure that best fits the need. We offer a complete product & expertise to engineer, manufacture and deliver the right pole to the right place at the right time ends.

A hardened line and greater resiliency start with a better pole. And finding a better pole starts with a call to Valmont®.

# DISTRIBUTION POLES: A PROVEN, RELIABLE SOLUTION



Distribution poles represent more than the final leg of the journey for your transmitted power. They support the lines that run along neighborhood streets, and deliver the power you generate to homes and businesses. That means there is more than power riding on your distribution lines. Reliability and trust move through with every kilowatt.

Our steel poles are designed to meet the height and class requirements when the load factor is in accordance with Steel has uniform material strength throughout the entire structure, providing more consistent and predictable results. With even uniformity and outstanding durability, steel distribution monopoles offer you a superior solution catering to your utility needs.

## Reduce Risk. Increase Stability.

### ENGINEERING EXPERTISE

- Steel monopoles are designed to **ASCE & SE Standards**
- Fabrication and quality meet or exceed **AWS & ASTM Standards**

### MAINTENANCE

- Steel monopoles come with a long service life & zero maintenance to deliver reliable performance

### DESIGN

- Our steel monopoles can be **custom-engineered & fabricated** to support larger & heavier loads, longer spans and clearance requirements
- Less susceptible to failure during severe wind storms and other weather conditions due to in-built flexibility

### EASE-OF-INSTALLATION

- The lighter weight of steel, fewer components and the convenience of pre-drilling, mean steel distribution poles can be installed faster
- Climbing attachments such as ladders or steps can easily be added to steel monopoles

### LOW LIFE-CYCLE COSTS

- The **life expectancy of steel poles is longer**, providing a cost avoidance associated with future installation, maintenance and troubleshooting over the life of the structure

### CORROSION PROTECTION

- As an industry leader for hot-dip galvanising services, our steel monopoles are custom-galvanised offering reliable protection that will last for decades



**valmont**   
STRUCTURES

**UTILITY STEEL POLES**  
*Our Power Starts With You*

Valmont is recognised throughout the world as

an industry leader in power delivery structures.



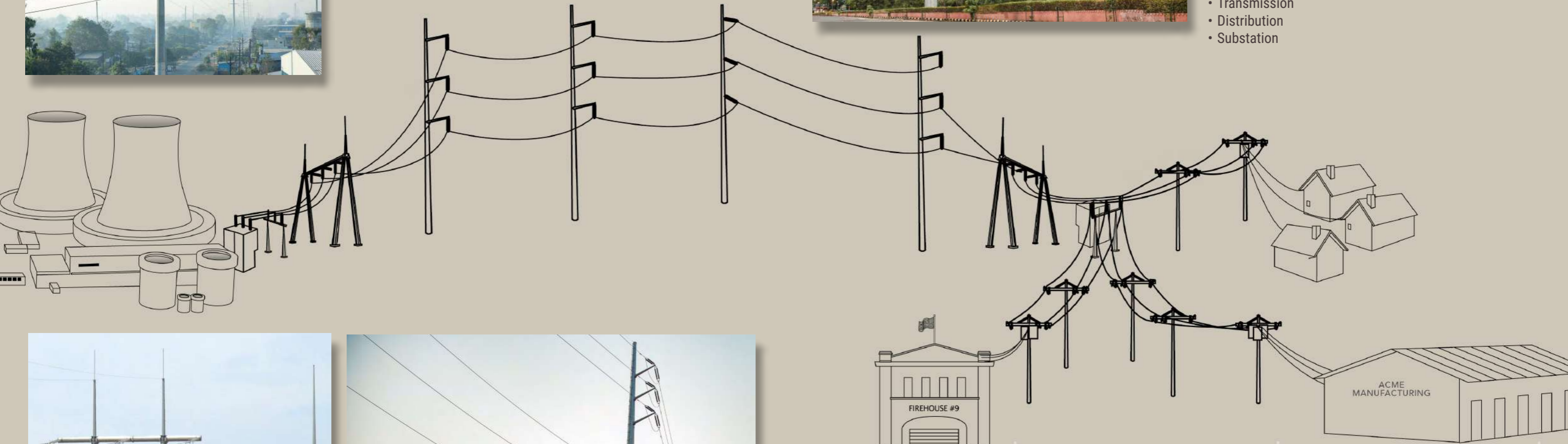
**Products and Services.** Our global reach allows us to share best practices, materials and technologies with engineers, designers and manufacturers from other nations, ensuring that our customers get the “best of all worlds.” Multiple global manufacturing facilities allow for greater accessibility in production, coordination and ease of delivery across various locations, ultimately staying true to our commitment of providing our customers with timely delivery.



**Engineering and Design.** Valmont is widely recognised as a global leader in structural engineering, continually setting the standard for engineering design and installation around the world. With more than 60 years of combined experience in structural testing and design, Valmont’s engineers have the resources, the capacity and the capabilities to anticipate and meet customers’ needs, which sets us apart from the competition.

We have the right products for your power delivery applications:

- Transmission
- Distribution
- Substation

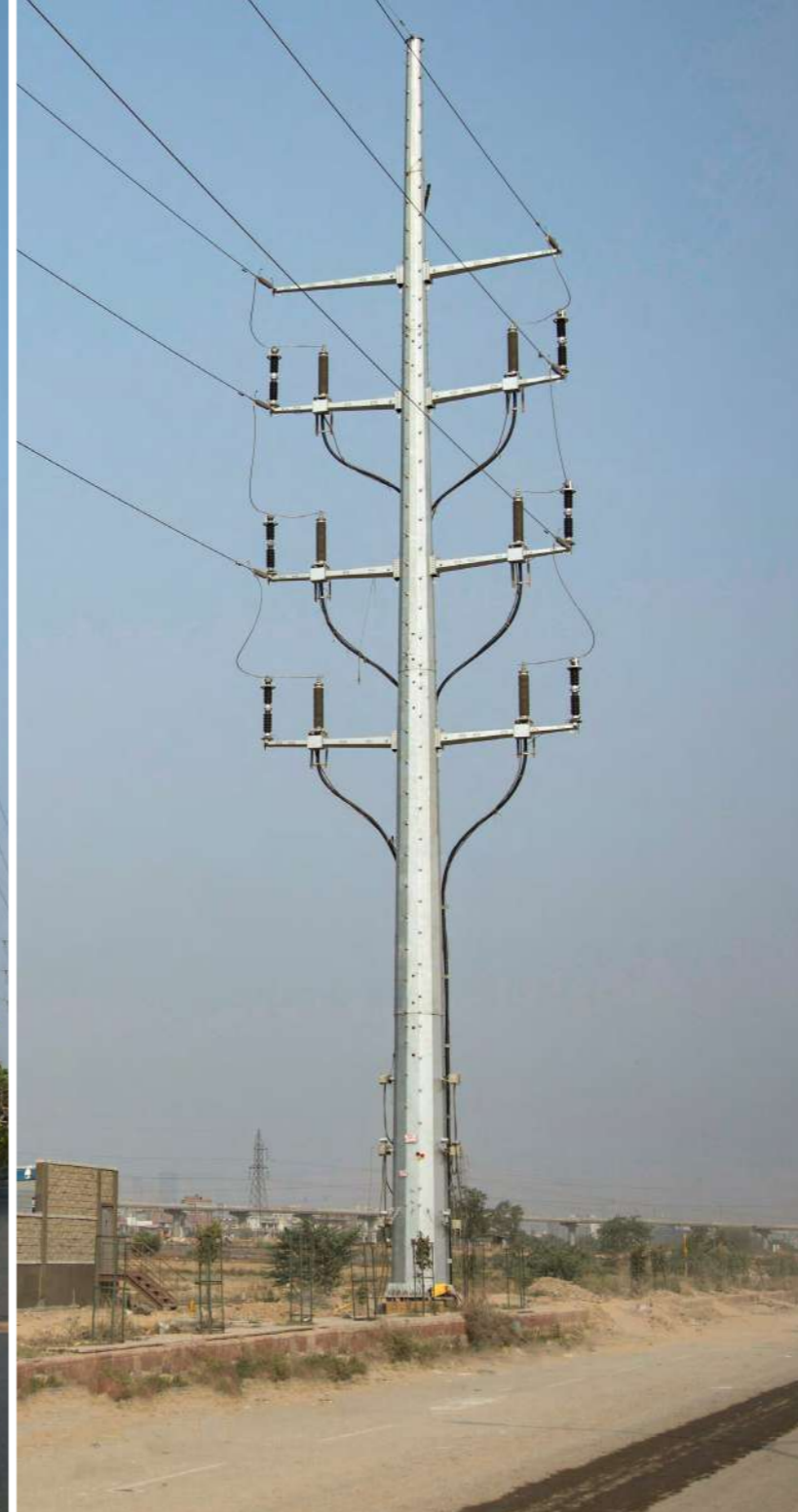


**Quality Control.** Valmont® takes great care at each step of the design and manufacturing process to ensure our products meet the highest quality standards and regulatory requirements while also ensuring timely delivery, adhering to specifications and being cost-effective.

**From Plant to People.** Today’s utility industry is seeking cost-effective ways to improve grid reliability while maximising operating efficiency. Valmont® is here to help you design and build products in the most efficient way to harness the power from power plants and channel it to homes, hospitals and businesses. Challenge us with your projects and see why we’re recognised as a worldwide leader in power delivery.



**Commitment to Research.** Research and Development are the hallmark of Valmont’s progress and leadership in the industry. Perfecting existing designs and developing innovative products are the major goals of the Valmont® R&D program. The developments will continue to be customer-driven to advance state-of-the-art innovations. To further advance such innovations, Valmont® participates in most major industry standards associations.



# Steel Transmission

Valmont's experience and innovative ideas, combined with the unique attributes of steel, allow us to meet the challenges of today's demanding market.

- Reliable
- Versatile
- Light weight
- Easy installation
- All finishes available
- AISC Certification
- Environmentally Safe
- Aesthetically pleasing



Engineering equipment created into Valmont's CNC plasma cutting equipment creates precise cut steel components.



Our 2,000-Ton press brake is among the most reliable and powerful in the industry. Limitless combinations of length, diameter, thickness and taper are possible during the forming process.



Bolted and welded connections must be accomplished with the utmost accuracy to ensure proper fit-up of mating pieces.



Full penetration welds are always inspected and verified ultrasonically. The component does not progress to the next phase of fabrication until it passes completely.

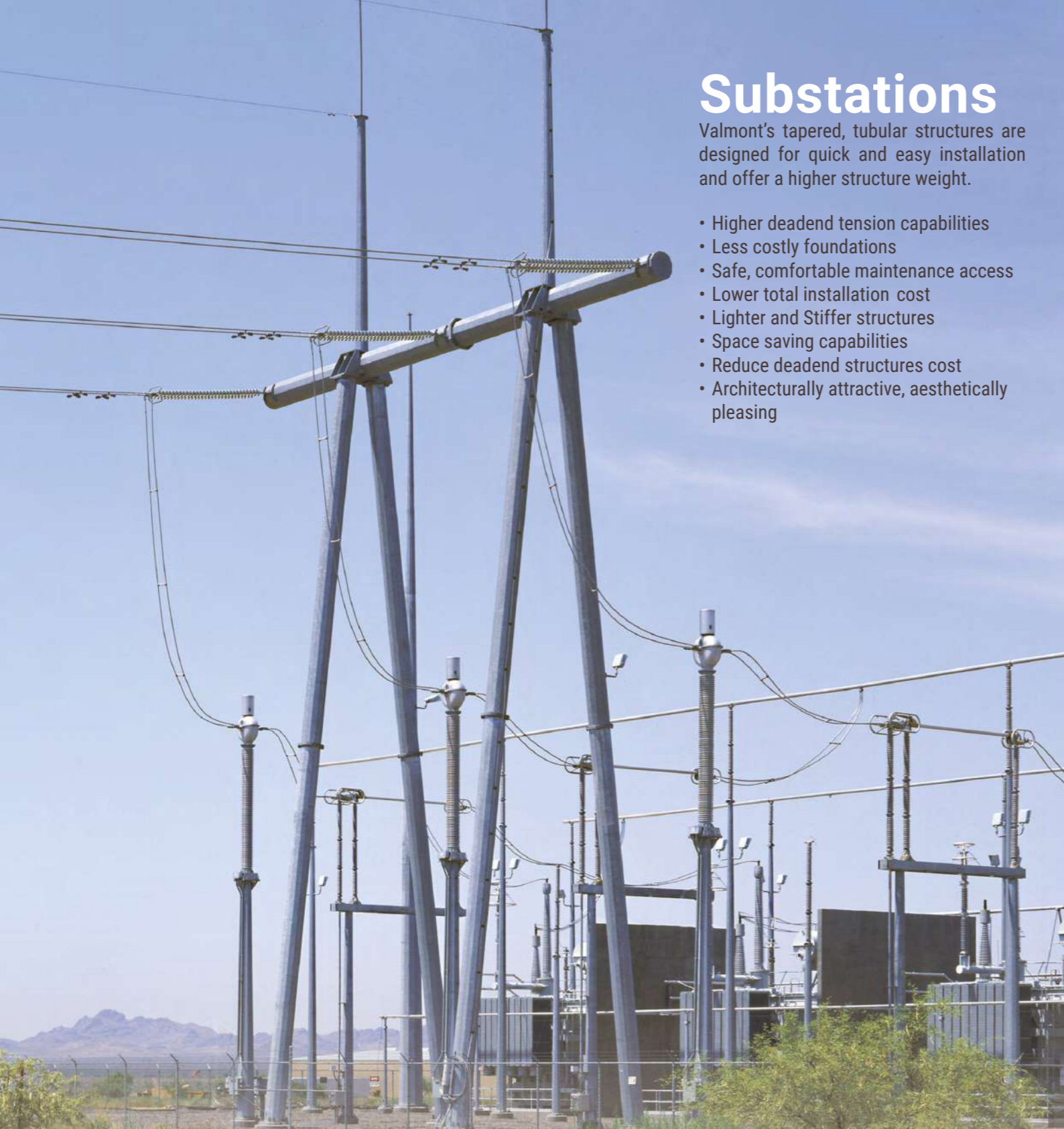


Depending on your choice of finish, Valmont poles are transported to the appropriate processor to receive professional application treatments.

# Substations

Valmont's tapered, tubular structures are designed for quick and easy installation and offer a higher structure weight.

- Higher deadend tension capabilities
- Less costly foundations
- Safe, comfortable maintenance access
- Lower total installation cost
- Lighter and Stiffer structures
- Space saving capabilities
- Reduce deadend structures cost
- Architecturally attractive, aesthetically pleasing



# Steel Distribution

Valmont® is one of the largest suppliers of steel distribution poles in the world. Valmont® is a proven leader you can rely on for round-tapered steel distribution poles.

- Consistent strength
- Lower lifetime costs
- Easy installation
- Environmentally Safe
- Low maintenance
- Light weight
- Uniform dimensions
- Coating and colour options
- Fire resistant
- Simple to order





To know more about products manufactured by Valmont® Structures in India, please visit our website [www.valmont.in](http://www.valmont.in).

Find us on Facebook



[www.facebook.com/valmont.india](http://www.facebook.com/valmont.india)

Follow us on



@ValmontIndia

### **Corporate Office**

Valmont Structures Pvt. Ltd.  
Unit 203, 2nd Floor, Pentagon 4  
Magarpatta City, Hadapsar  
Pune - 411013, Maharashtra, India  
Tel: +91-20-3040 3831/33/34  
[marketingindia@valmont.com](mailto:marketingindia@valmont.com)

### **Factory**

Valmont Structures Pvt. Ltd.  
A-20, Indapur Industrial Area  
M.I.D.C., Indapur, Pune Dist. - 413132  
Maharashtra, India  
Tel: +91-2111 252000  
[sales.india@valmont.com](mailto:sales.india@valmont.com)

Copyright © Valmont Structures Pvt. Ltd. All Rights Reserved. This document is the sole property of Valmont Structures Pvt. Ltd. No part of this document may be reproduced, stored in a retrieval system, or transmitted in any form or by any means - electronic, mechanical, photocopying, recording or otherwise - without prior written permission of the concerned authority.



# METAL BEAM CRASH BARRIERS

*Our Mission Starts and Ends With Safety*

**Thrie-Beam**

**HIGHWAY**

**Guardrail**

Grade Steel

Traffic Safety Solutions

**Performance**  
Security

**081 M OHSAA**

**SAFETY**

C-Channel

**W-Beam**

Crash Barriers

Hot-Dip Galvanised



## YOUR SAFETY, OUR PRIORITY

*Guardrail barriers provide semi-rigid protection to shield motorists from hazards located close to the edge of the travelled way.*

Our guardrail's uniformly high resistance to impact is assured by its continuous flexible beam action. This prevents dangerous pocketing and at the same time minimises the ride down acceleration experienced by the vehicle and its occupants.

The high visibility of guardrail creates driver confidence. This is an intangible but exceedingly important factor. At night or in fog conditions, the excellent visibility of guardrail highlights the limit of safe travel and reduces dangerous centre line crowding.



Our range of road and highway safety barriers include the various types of W-Beam and Thrie-Beam systems approved for use on India's roads. These include Ezy-Guard Smart W-Beam, which is fully compliant to MASH TL3.

We have also extended this product family with the Ezy-Guard High Containment, the first Thrie-Beam barrier in India, which is compliant to MASH TL4. This offers a large increase in containment with a 58% increase in impact energy when compared to the old 350 TL4 systems.

## SAFETY BARRIER APPLICATIONS

Valmont Aircon's guardrails are manufactured using the Cold Roll Forming Technology with multiple roll forming stations ensuring greater strength due to grain reorientation as compared to the normal press-formed sections. These sections are of 'W' and Thrie-Beam shapes with a thickness of 3mm.

Following are some of the applications of these safety barrier systems:

- Highways, Flyovers & Bridges
- Median Barriers as Road Separators
- Protection from Trees, Rocky Areas etc.
- Hilly Terrain, High Embankments etc.
- Test Tracks in Automobile Industry
- Mass Housing Complexes/Townships
- Airports, Railway Stations and Parking Lots

## W-BEAM WITH C-POST

The most common guardrail system consists of a steel W-Beam rail on steel posts with end treatments and transitions of various designs using similar materials. The W-Beam type safety barrier shall consist of a steel post and a 3mm thick 'W' Beam rail element.

The steel post and the blocking out spacer shall both be channel section of 75mm x 150mm size and 5mm thick. The rail shall be 70 cm above the ground level and posts shall be spaced 2m center-to-center. A double 'W' Beam barrier shall be as indicated in IRC:5-1998.



## TECHNICAL SPECIFICATIONS

- Cold Roll-Formed
- Raw Material: IS 2062 FE 410/510 Grade Steel
- Tailored to customer needs
- Hot-Dip Galvanised (550 GSM minimum)

Valmont Aircon's guardrails conform to the AASHTO M180 specification standards for Metal Beam Crash Barriers.

We follow and adhere to the guidelines for manufacturing and installation of Metal Beam Crash Barriers as specified by the Ministry of Road Transport and Highways (MoRTH), Government of India and the National Highways Authority of India (NHAI).

Specifications	
C-Channel Post Length	1,800mm
C-Channel Post Mass	18.5kg
C-Channel System Mass	22.5kg ± 2%
Rail Height Above Ground	710mm
C-Post Height Above Ground	700mm
Post Spacing	2,000mm

# ENGINEERED WITH PRECISION

Possessing an extensive engineering expertise, Valmont understands the countless variables involved in manufacturing simple yet modern and durable crash barrier systems. With a strong heritage of proven results in engineered highway safety products, these systems can be built as per industry standards and certified specifications to meet the needs of almost any project. With world-class resources and local expertise, Valmont Structures manufactures these rugged systems at its plant in Chakan in Pune, Maharashtra.

### W-BEAM TYPES

\*All dimensions are in mm

### BASE PLATE & POST/SPACER DETAILS

**BASE PLATE**  
(250 X 250 X 16THK.)

**POST & SPACER C-CHANNEL**  
(150 X 75 X 5 THK.)

\*All dimensions are in mm

### THRIEBEAM TYPES

\*All dimensions are in mm

### THRIEBEAM SPECIFICATIONS

**All other dimensions are as per W-Beam**

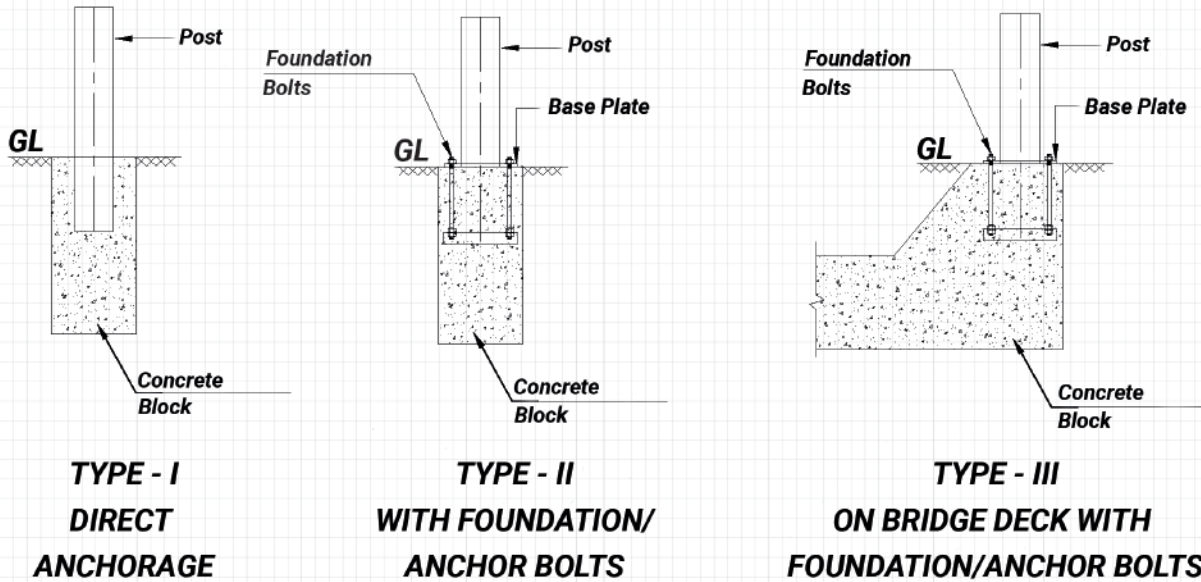
\*All dimensions are in mm

### W-BEAM SPECIFICATIONS

\*T = 2.67/2.74/2.82/3.0

\*All dimensions are in mm

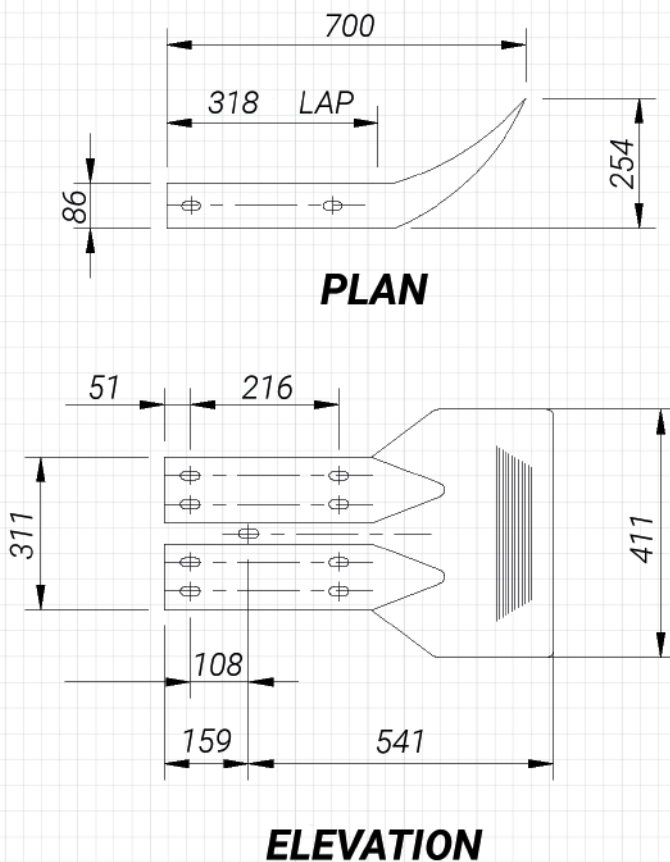
## TYPICAL FOUNDATION DETAILS



\*All dimensions are in mm

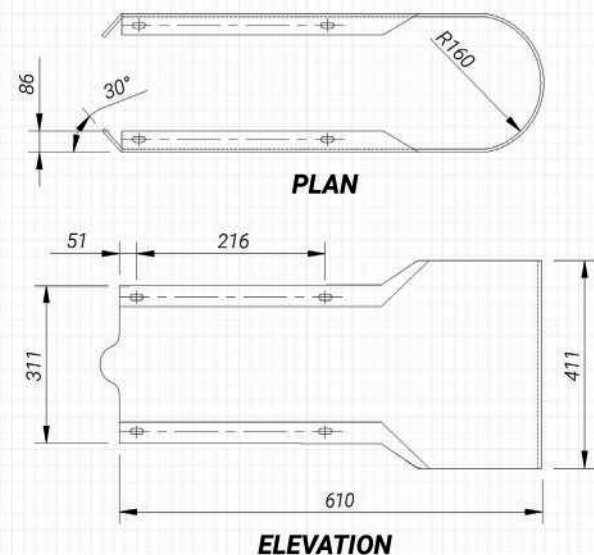
## W-BEAM: END CONNECTION

### 1. FISHTAIL



\*All dimensions are in mm

### 2. BUFFER END



\*All dimensions are in mm

## ABOUT US

Valmont is a leading manufacturer and supplier of safety barriers with its in-house hot-dip galvanising plant. We are the market leader for safety barrier systems and continue to service our customers through our on-going program of research and development. We have built our reputation on a company-wide customer service, innovation and cost-effective solutions. Most importantly, we put our experience, understanding of customer needs, technology and operational excellence into everything we design and manufacture. We pride ourselves on being people of integrity who excel at delivering optimal results.



To know more about products manufactured by Valmont India, please visit our website [www.valmont.in](http://www.valmont.in).

Find us on Facebook



[www.facebook.com/valmont.india](http://www.facebook.com/valmont.india)

Follow us on



[@ValmontIndia](https://twitter.com/ValmontIndia)

### Corporate Office

Valmont Structures Pvt. Ltd.  
Unit 203, 2<sup>nd</sup> Floor, Pentagon 4  
Magarpatta City, Hadapsar  
Pune - 411013, Maharashtra, India  
Tel: +91-20-30403831/32/33/34  
[marketingindia@valmont.com](mailto:marketingindia@valmont.com)

### Aircon Factory

Gat No. 123/2, Shed No. 7  
Vatsalya Warehouse, Murhe Vasti  
Chimbli Phata, Moi Road  
Kuruli, Taluka Khed, Chakan  
Pune - 410501, Maharashtra, India

### Indapur Factory

Valmont Structures Pvt. Ltd.  
A-20, Indapur Industrial Area  
M.I.D.C., Indapur  
Pune - 413132, Maharashtra, India  
Tel: +91-2111 252000  
[sales.india@valmont.com](mailto:sales.india@valmont.com)

Copyright © Valmont Structures Pvt. Ltd. All Rights Reserved. This document is the sole property of Valmont Structures Pvt. Ltd. No part of this document may be reproduced, stored in a retrieval system, or transmitted in any form or by any means - electronic, mechanical, photocopying, recording or otherwise - without prior written permission of the concerned authority.